

PN10 150 Series Compression Fittings

Product Technical sheet

ABOUT

Plas-Fit series 150 PN10 Fittings are suitable for joining high and low density polyethylene pipes: (PE-HD, PE-LD, PE40, PE63, PE80, PE100 and PE100RC) and are manufactured according to ISO4427, EN12201.

The fittings comply with the following international standards:

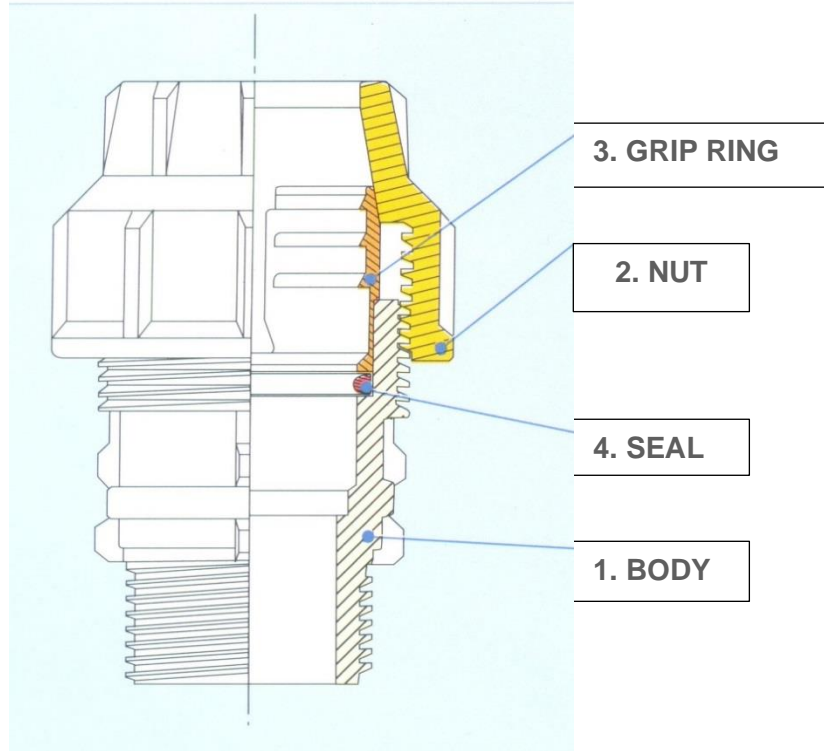
- EN712,EN713,EN715
- NKB 18
- Threads are according to ISO7-1.

Working pressure: Fittings with diameter 16 - 63 mm are pressure rating PN10.

Working temperature: up to 40°C.



STRUCTURE AND MATERIALS



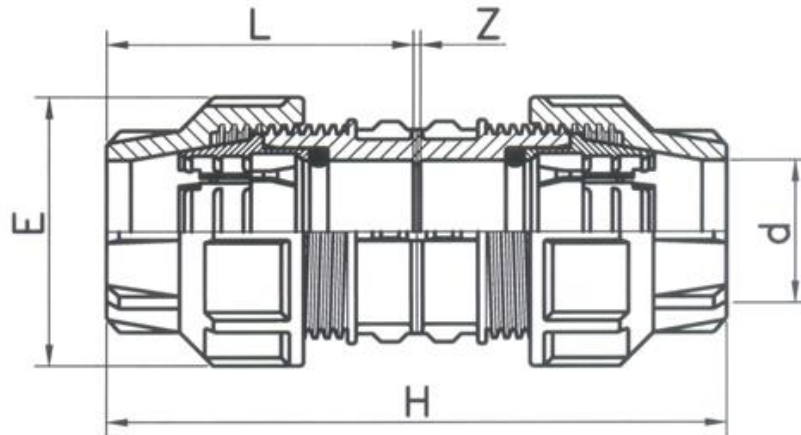
MATERIALS

#	Part	Material	Grade	Color	Note
1	Body	Polypropylene	160E 8229-01	Black	-
2	Nut	Polypropylene	E50E	Green	-
3	Grip Ring	POM	F 20-EW	White	-
4	Seal	NBR	N65WKZ 70IRHD	Black	Size 16-25 – D-ring Size 32-50 – T-ring Size 63 – Easy seal
5	Reinforcement-ring	SS304			

*Raw materials are subjected to all types of fittings.

DIMENSIONS

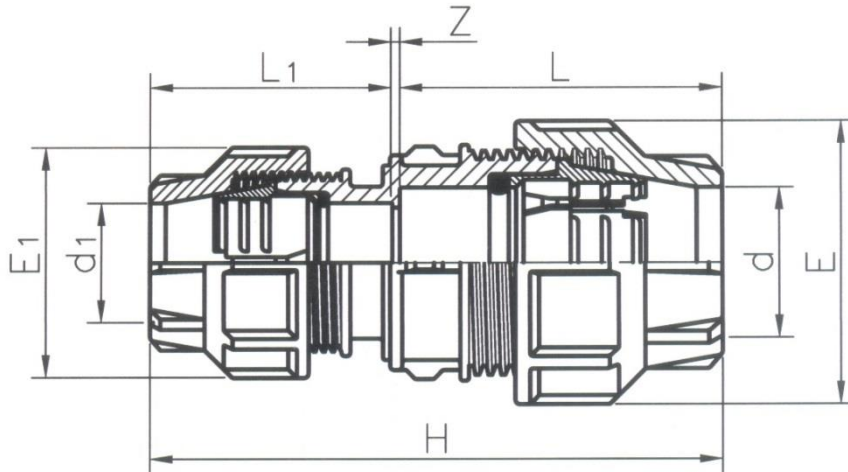
COUPLING



dXd	Cat No	L	Z	H	E	W (gr)
16X16	15016M1016	42.5	2	87	38	35
20X20	15020M1020	52.7	2.6	108	46	60
25X25	15025M1025	61.1	2.8	125	52	85
32X32	15032M1032	66.7	2.6	136	64	140
40X40	15040M1040	74	4	152	78	240
50X50	15050M1050	95.5	5	196	94	435
63X63	15063M1063	115	7	237	113	680

DIMENSIONS

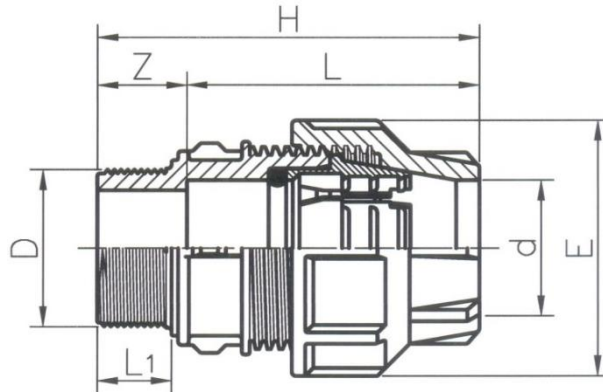
REDUCING COUPLING



dXd1	Cat No	L	L1	Z	H	E	E1	W (gr)
20X16	15020D1016	58	42	2	102	46	38	50
25X16	15025D1016	65	42	2	109	52	38	65
25X20	15025D1020	65	49	2	116	52	46	75
32X20	15032D1020	66	54.5	1.5	122	64	46	105
32X25	15032D1025	66	63	2	131	64	52	115
40X25	15040D1025	75	58	2	135	78	52	165
40X32	15040D1032	75	73.5	2.5	143	78	64	196
50X25	15050D1025	96	59	3	158	94	52	275
50X32	15050D1032	96	68	2	166	94	64	295
50X40	15050D1040	96	72.5	6.5	175	94	78	345
63Z32	15063D1032	114	68	7	189	113	64	445
63X40	15063D1040	114	72	6	192	113	78	480
63X50	15063D1050	114	96	6	216	113	94	580

DIMENSIONS

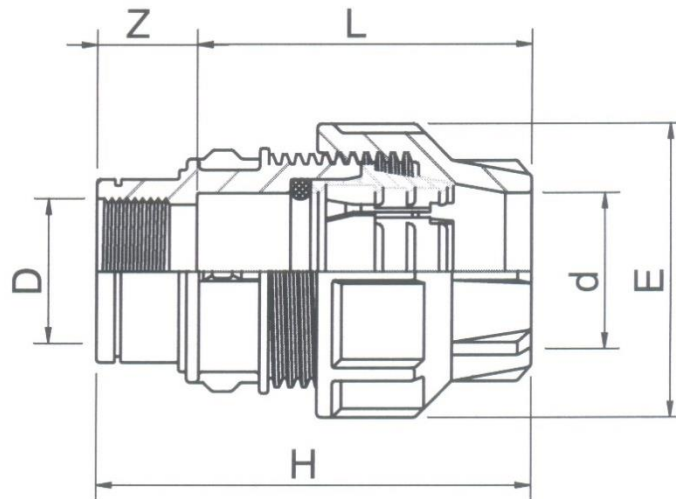
MALE THREADED COUPLING



dXD	Cat No	L	L1	Z	H	E	W (gr)
16x1/2"	15016M1101	43	16	29	72	38	20
16x3/4"	15016M1102	43	18	31	74	38	25
20x1/2"	15020M1101	61	15	22	83	46	40
20x3/4"	15020M1102	61	17	24	85	46	40
20x1"	15020M1103	61	19.5	25	86	46	40
25x1/2"	15025M1101	68	18	24	92	52	50
25x3/4"	15025M1102	67	18	25	92	52	55
25x1"	15025M1103	66	22	29	95	52	55
32x3/4"	15032M1102	67	20.5	30	97	64	80
32x1"	15032M1103	66	25.5	36	102	64	85
32x1 1/4"	15032M1104	68	26.5	35	103	64	85
40x1"	15040M1103	64	22	44	108	78	140
40x1 1/4"	15040M1104	76	26	39	115	78	155
40x1 1/2"	15040M1105	75	26	40	115	78	150
40x2"	15040M1106	75	26	44	119	78	155
50x1 1/2"	15050M1105	97	26	39	136	94	255
50x2"	15050M1106	97	26	39	136	94	260
63x1 1/2"	15063M1105	113	22.5	37	150	113	390
63x2"	15063M1106	114	25	38	152	113	400

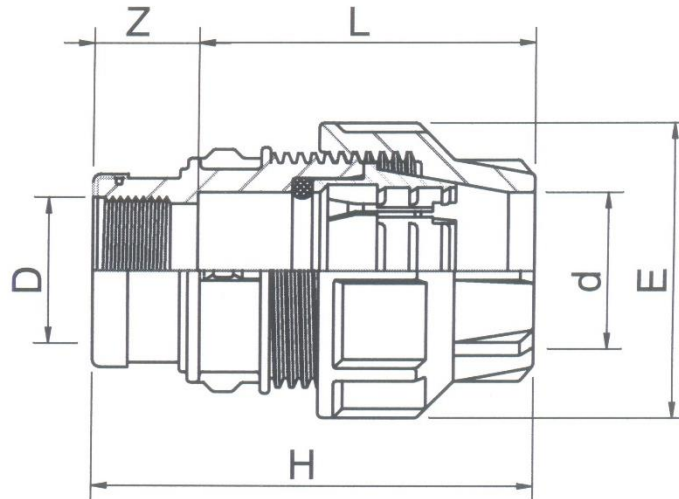
FEMALE THREADED COUPLING

FEMALE THREADED COUPLING WITHOUT S.S RING



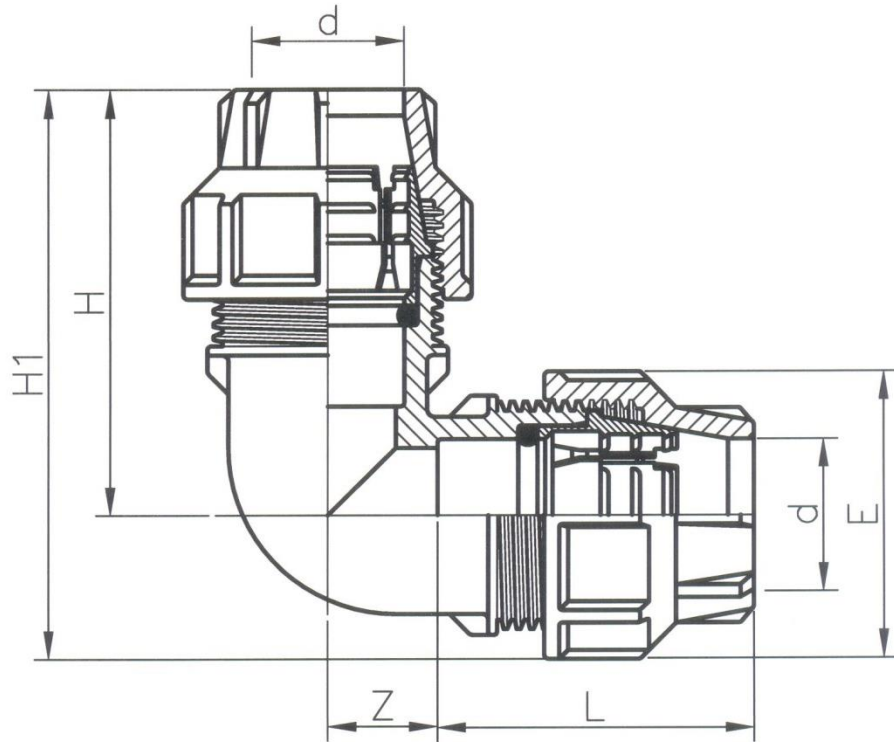
dXD	Cat No	L	Z	H	E	W (gr)
16x1/2"	15016M1201	42	26	68	38	25
16x3/4"	15016M1202	41	30	71	38	30
20x1/2"	15020M1201	52	27	79	46	40
20x3/4"	15020M1202	50	35	85	46	45
25x3/4"	15025M1202	60	25	85	52	55
25x1"	15025M1203	59	36	95	52	65
32x3/4"	15032M1202	68	30	98	64	90
32x1"	15032M1203	68	30	98	64	90

FEMALE THREADED COUPLING WITH S.S RING



dXD	Cat No	L	Z	H	E	W (gr)
32X1 1/4"	15032M1204	68	42	110	64	115
40X1 1/4"	15040M1204	76	35	111	78	155
40X1 1/2"	15040M1205	76	44	120	78	175
50X1 1/2"	15050M1205	98	38	136	94	275
50X2"	15050M1206	97	44	141	94	300
63X1 1/2"	15063M1205					
63X2"	15063M1206	114	32	146	113	405

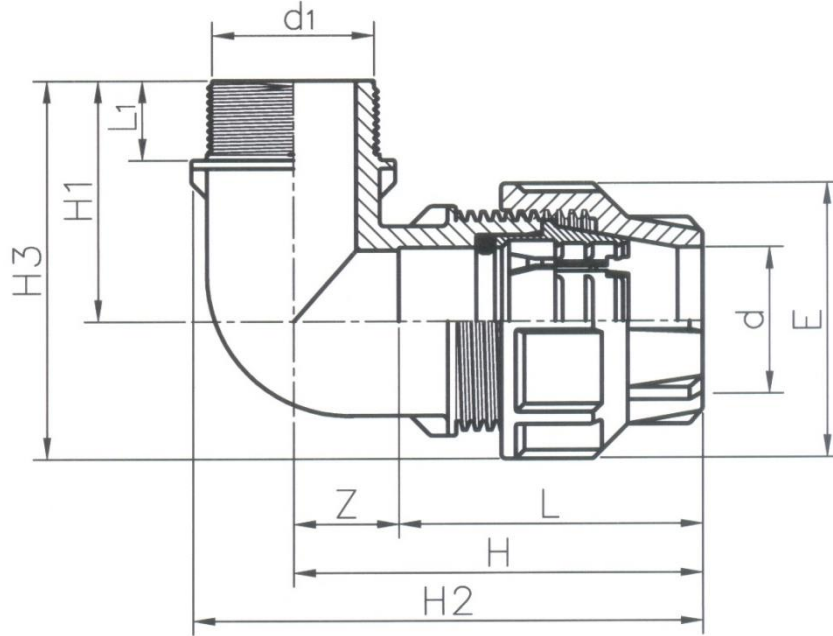
ELBOW



dXd	Cat No	L	Z	H	1H	E	W (gr)
16X16	15016Z1016	45	20	53	73	38	40
20X20	15020Z1020	54	24	73	89	46	75
25X25	15025Z1025	60	30	82	102	52	100
32X32	15032Z1032	72	42	94	125	64	155
40X40	15040Z1040	75	62	108	146	78	290
50X50	15050Z1050	96	72	133	180	94	505
63X63	15063Z1063	109	80	159	204	113	805

DIMENSIONS

MALE THREADED ELBOW

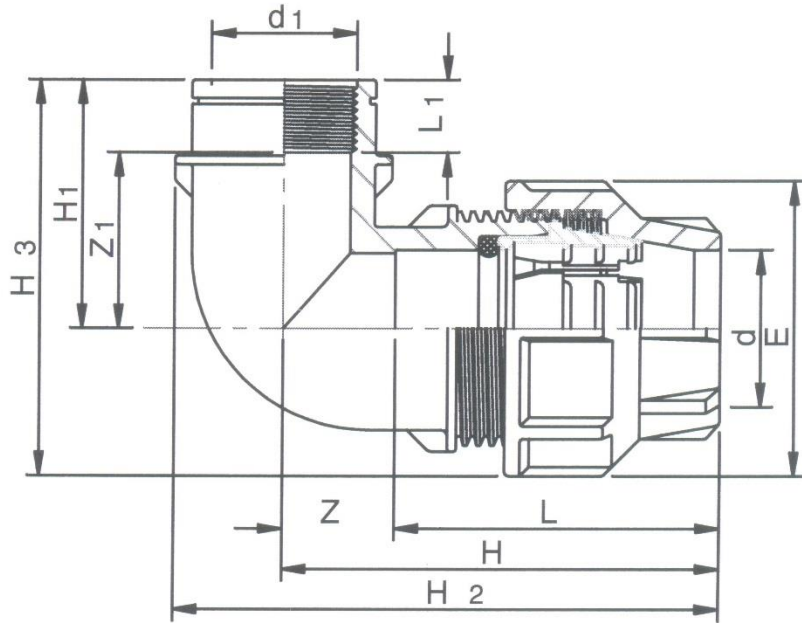


dXd1	Cat No	L	Z	H	L1	H1	H2	H3	W (gr)
16x1/2"	15016Z1101	45	9	54	16	41	71	59	25
16x3/4"	15016Z1102	45	9	54	18	43	71	62	30
20x1/2"	15020Z1101	52	18	70	16.5	48	89	72	45
20x3/4"	15020Z1102	52	18	70	19	50	89	74	50
25x1/2"	15025Z1101	61	21	82	20	55	104	82	60
25x3/4"	15025Z1102	61	21	82	18	55	102	83	65
25x1"	15025Z1103	61	21	82	21.5	59	102	85	65
32x3/4"	15032Z1102	66	26	92	20	59	117	93	95
32x1"	15032Z1103	66	26	92	20	59	117	93	100
40x1 1/4"	15040Z1104	74	30	104	24	69	130	108	190
40x1 1/2"	15040Z1105	74	30	104	24.5	69	135	111	195
40x2"	15040Z1106	74	30	104	26.5	73	135	113	210
50x1 1/2"	15050Z1105	96	35	131	25	85	166	134	325
50x2"	15050Z1106	96	35	131	25	85	171	134	350
63x2"	15063Z1106	113	44	157	30	105	194	162	490

DIMENSIONS

FEMALE THREADED ELBOW

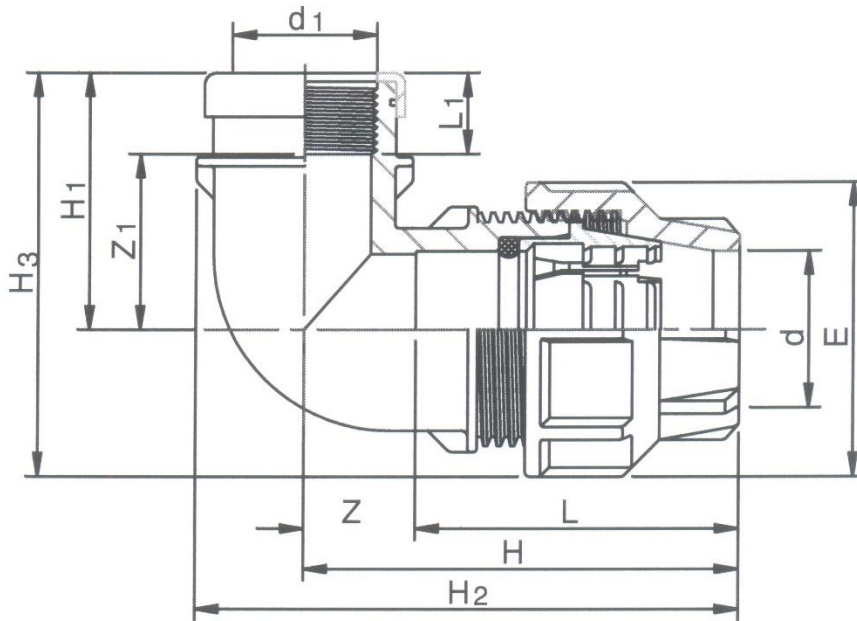
FEMALE THREADED ELBOW WITHOUT S.S RING



dXd1	Cat No	L	Z	H	E	L1	Z1	H1	H2	H3	W (gr)
16x1/2"	15016Z1201	45	10	55	38	17	21	38	70	56	30
16x3/4"	15016Z1202	45	10	55	38	16	24	40	73	59	30
20x1/2"	15020Z1201	52	20	72	46	18	34	52	90	75	55
20x3/4"	15020Z1202	52	20	72	46	18	34	52	90	75	55
25x3/4"	15025Z1202	61	22	83	52	19	40	59	104	85	70
25x1"	15025Z1203	61	22	83	52	21	40	61	104	87	75

DIMENSIONS

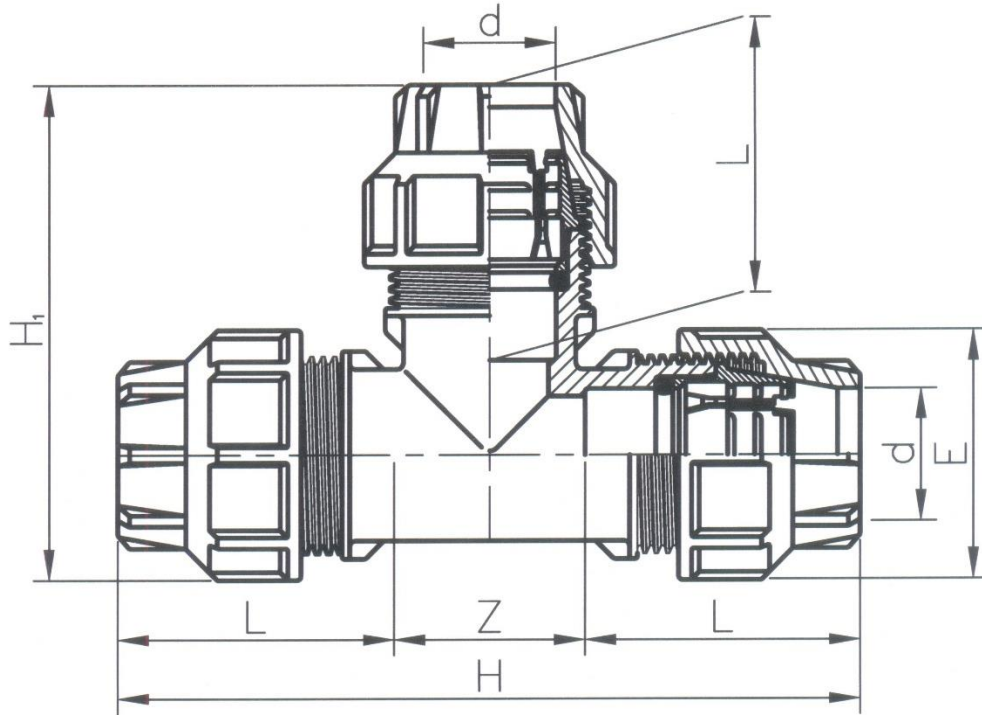
FEMALE THREADED ELBOW WITH S.S RING



dx d1	Cat No	L	Z	H	E	L1	Z1	H1	H2	H3	W (gr)
32X3/4 "	15032Z1202	66	26	92	64	19	34	53	117	86	100
32X1"	15032Z1203	66	26	92	64	22	39	61	117	93	110
40X1 1/4"	15040Z1204	75	31	106	78	25	45	70	136	109	210
40X1 1/2"	15040Z1205	75	31	106	78	26	48	74	136	115	225
50X1 1/4"	15050Z1204	97	38	135	94	29	56	85	165	132	345
50X1 1/2"	15050Z1205	97	38	135	94	25	60	85	165	134	360
50X2	15050Z1206	97	38	135	94	27	59	86	171	134	395
63X1 1/2"	15063Z1205	111	45	156	113	26	79	105	191	162	505
63X2	15063Z1206	111	45	156	113	35	72	107	199	162	545

DIMENSIONS

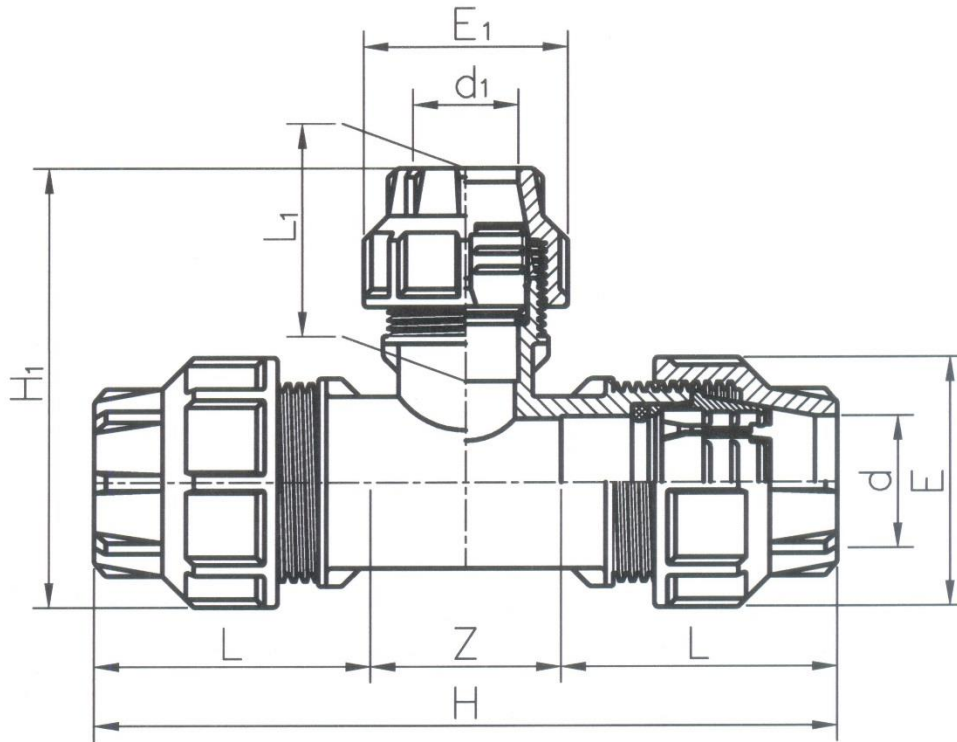
TEE



dx dx dx	Cat No	L	Z	H	H1	E	W (gr)
16X16X16	15016T1016	45	20	110	73	38	55
20X20X20	15020T1020	54	24	132	89	46	105
25X25X25	15025T1025	60	30	150	102	52	135
32X32X32	15032T1032	72	42	186	125	64	235
40X40X40	15040T1040	75	62	212	146	78	430
50X50X50	15050T1050	96	72	264	180	94	760
63X63X63	15063T1063	109	80	298	204	113	1120

DIMENSIONS

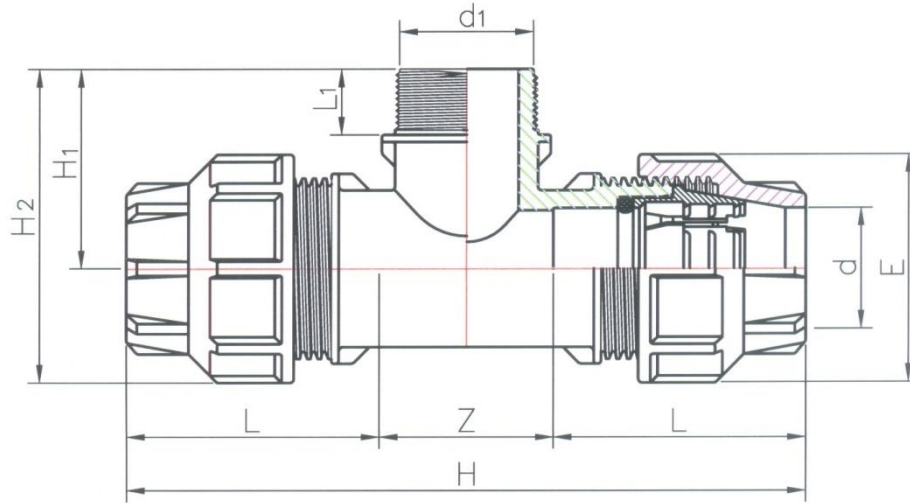
REDUCING TEE



dx dx	Cat No	L	Z	H	E	L1	H1	E1	W (gr)
20X16X20	15020T1016	54	24	132	46	49	84	38	90
25x16x25	15025T1016								
25X20X25	15025T1020	60	30	150	52	53	97	46	130
32X16X32	15032T1016								
32X25X32	15032T1025	72	42	186	64	68	121	52	210
40X32X40	15040T1032	75	62	212	78	73	141	64	375
50X40X50	15050T1040	96	72	264	94	74	164	78	665
63X50X63	15063T1050	109	80	298	113	104	196	94	1000

DIMENSIONS

MALE THREADED TEE

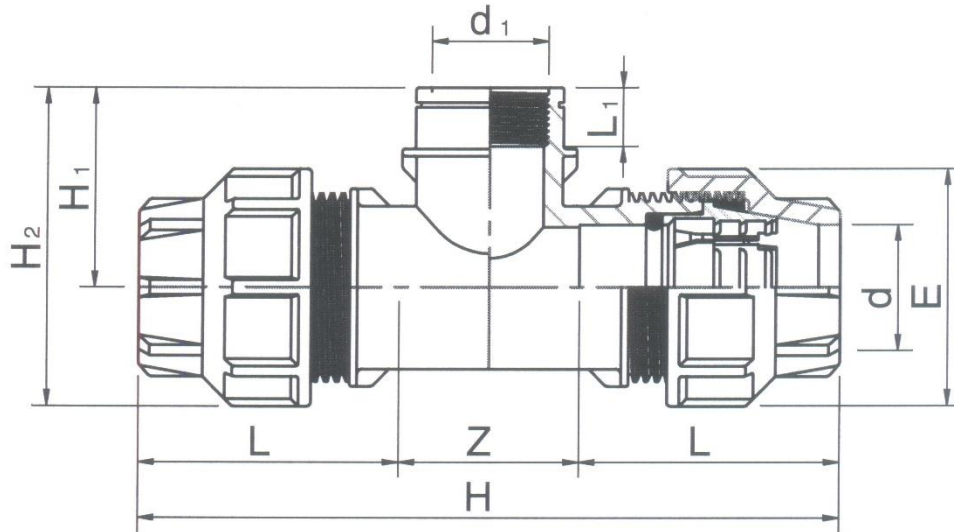


dXdx d	Cat No	L	Z	H	E	L	H1	H2	W (gr)
16x1/2"x16	15016T1101	45	20	110	38	19	37	59	45
16x3/4"x16	15016T1102	45	20	110	38	22	40	62	45
20x1/2"x20	15020T1101	54	24	132	46	18	42	66	80
20x3/4"x20	15020T1102	54	24	132	46	20	45	68	80
25x1/2"x25	15025T1101	60	30	150	52	18	46	73	100
25x3/4"x24	15025T1102	60	30	150	52	20	48	75	105
25x1"x25	15025T1103	60	30	150	52	23	49	76	110
32x3/4"x32	15032T1102	72	42	186	64	20	60	93	175
32x1"x32	15032T1103	72	42	186	64	20	60	93	175
40x1"x40	15040T1103								
40x1 1/4"x40	15040T1104	75	62	212	78	26	72	113	325
40x1 1/2"x40	15040T1105	75	62	212	78	26	72	113	330
40x2"x40	15040T1106	75	62	212	78	26	72	113	340
50x1 1/4"x50	15050T1104	96	72	264	94	25	78	129	565
50x1 1/2"x50	15050T1105	96	72	264	94	26	78	129	575
50x2"x50	15050T1106	96	72	264	94	28	82	133	590
63x1 1/2"x50	15063T1105	109	80	198	113	24	83	141	800
63x2"x63	15063T1106	109	80	198	113	29	87	145	840

DIMENSIONS

FEMALE THREADED TEE

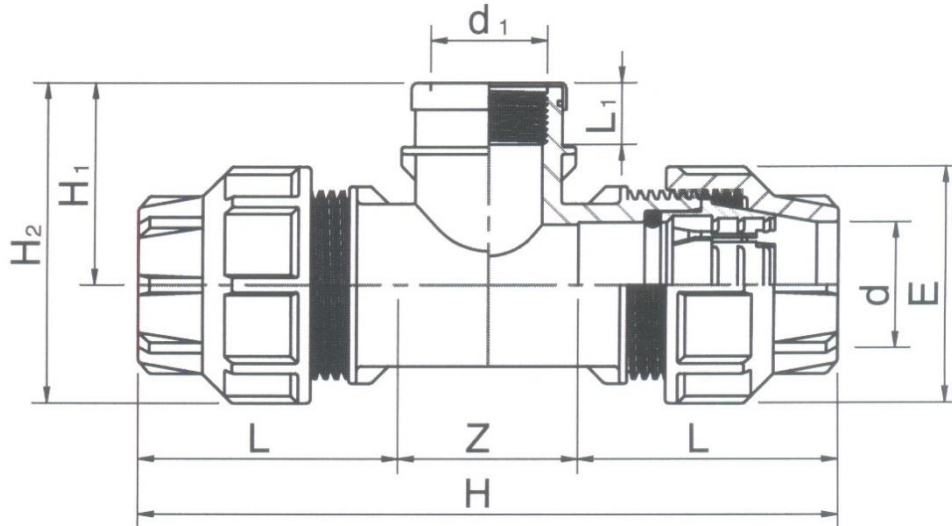
FEMALE THREADED TEE WITHOUT S.S RING



dx ₁ xd	Cat No	L	Z	H	E	L ₁	H ₁	H ₂	W (gr)
16x1/2"x16	15016T1201	45	20	110	38	17	37	57	45
16x3/4"x16	15016T1202	45	20	110	38	18	40	59	50
20x1/2"x20	15020T1201	54	24	132	46	18	46	70	85
20x3/4"x20	15020T1202	54	24	132	46	18	46	70	85
25x1/2"x25	15025T1201	60	30	150	52	16	44	71	105
25x3/4"x24	15025T1202	60	30	150	52	19	46	73	119
25x1"x25	15025T1203	60	30	150	52	21	52	79	120
32x3/4"x32	15032T1202	72	42	186	64	19	58	85	180
32x1"x32	15032T1203	72	42	186	64	25	58	93	190
32x1 1/4"x32	15032T1204								
40x1"x40	15040T1203	75	62	212	78	22	72	110	330

DIMENSIONS

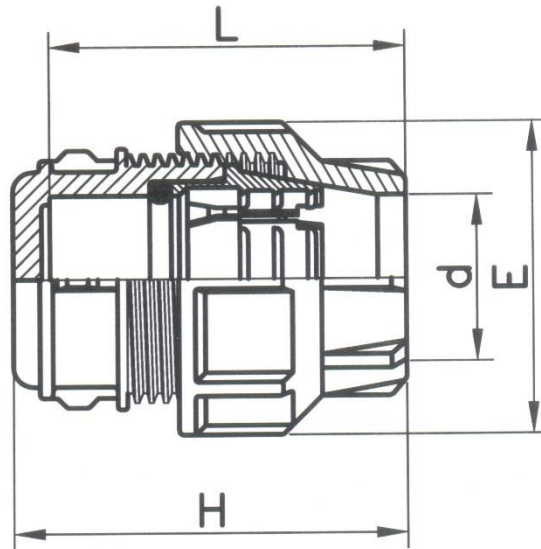
FEMALE THREADED TEE WITH S.S RING



dxd1xd	Cat No	L	Z	H	E	L1	H1	H2	W (gr)
40x1 1/4"x40	15040T1204	75	62	212	78	24	69	113	345
40x1 1/2"x40	15040T1205	75	62	212	78	24	73	113	365
50x1 1/4"x50	15050T1204	96	72	264	94	24	79	128	590
50x1 1/2"x50	15050T1205	96	72	264	94	24	73	131	605
50x2"x50	15050T1206	96	72	264	94	26	85	134	640
63x1 1/2"x63	15063T1205	109	80	298	113	26	85	143	855
63x2"x63	15063T1206	109	80	298	113	28	87	143	885

DIMENSIONS

LINE END



dxd	Cat No	L	H	E	W (gr)
20	15020S1120	59	64	46	36
25	15025S1120	60	74	52	52
32	15032S1120	67	76	64	83
40	15040S1120	95	101	78	141
50	15050S1120	98	123	94	253
63	15063S1120	114	125	113	382



Compression Fittings

Assembly Instructions - Sizes 16mm to 75mm

rev. 1.1

	<p>Cut the pipe straight; chamfer the pipe with Plas-Fit chamfering tool.</p>
	<p>Unscrew the nut up to the last thread. DO NOT remove the nut completely.</p>
	<p>Position the end of pipe at the center of the fitting, and mark the insertion depth on the pipe.</p>
	<p>Push the pipe firmly into the fitting. Until the mark on the pipe has been reached. For easier insertion, lubricate the pipe.</p>
	<p>Firmly tighten the nut by hand, until only 1-2 threads are visible. If needed, use Plas-Fit wrench for tightening</p>



RECYCLE AFTER USE
(PP PLASTIC MATERIAL)

www.plas-fit.com