

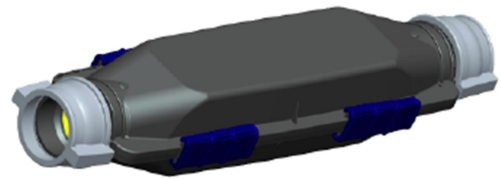
I Closure

Product Technical sheet

Product Description

Each Kit shall comprise of the following components:

- Lower Shell (1pc)
- Upper Shell (1pc)
- Seal (1pc)
- Upper Cap (2pcs)
- Pin (4pcs)
- Spacers (2pcs)
- Self-tapping Pozi-driv countersunk screws (4pcs)
- Port supports (2pcs)
- Hose Clips (2pcs)



Technical Specification

Materials:

Shell: PP

Spacers: Nylon

Seal TPE

Port Supports: Polypropylene

Clamp Plates: Nylon

Dimensions:

Length: 615mm (24.2").

Width: 159mm (6.26").

Height: 108mm (4.25").

Weight: 2040g

Color: Shells to be Black

All the other plastic parts are to be black.

Application: DB or DI

For Duct size: OD 50mm

